

TECHNICAL SPECIFICATIONS

Thickness	2.3mm
Core material	HDF
Panel Size	8ft (2440mm) x 4ft (1220mm)
Designs	More than 32 Designs in Raw Finish
Available in	Raw Unpolished
Polish Type	Dual Tone with Antique Effect / DUCO Finish / PU Finish can be given.
Fixing	Similar to the way veneer is fixed.
Applications	Wall/Ceiling Cladding, Shutter Cladding & Furniture Embellishments

WHY ACTION TESA EMBOSSED PANELS

- Action Tesa Embossed on HDF sheet at its semi cure stage while other embossed designs are available on MDF sheet.
- Action Tesa has more depth in Embossed HDF sheets and the depth is normally higher than 0.6mm whereas the others are just 0.2, 0.3mm. This results in a much more beautiful panel on Tesa HDF.
- Action Tesa uses European technology to make the Embossed Panels and all the Embossed Molds are imported from Europe with better Chrome Plating to give a smoother and glossy finish on the surface and the sharpness in edges of Embossing is more in compare with Local panels available.
- The density of the Tesa product is more than 850kg/m³ to ensure that consumption of paint is to be minimize while the other Embossed Panels consumes more paint. The back side of our Embossed is having rough surface so that bonding is better when glue applied and fixed on any substrate.
- All raw material being manufactured by Action Tesa itself while other manufacturers buy the MDF sheets from different channel, which resulting variation in quality. Action Tesa used consistent quality of raw material to make it's Embossed Sheet.
- Action tesa HDF Embossed Panels are ideally suitable for polishing, painting, PVC film pressing, membrane pressing etc.
- Action Tesa is using DOME technology so the moisture content is distributed equally in panels while other panels having high moisture content & moisture is not equally distributed, resulting more complaint. Action Tesa HDF Board which is being specially manufactured in-house with lot of wax so that the paint consumption is much less as compared to any other panel available.
- The molecular structure & IB in Tesa Panels is better than other Embossed Panels because Tesa is Embossing in semi cure (After the Mat formation) while other panels give the Pressure on surface after the MDF get completely cure thus creating destruction in molecular structure.
- Action Tesa has the widest range of more than 32 Designs.



www.actiontesa.com

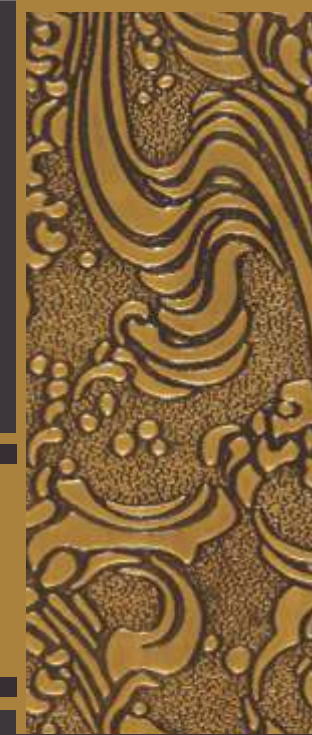
Balaji Action Buildwell

Corporate Office: G-11, Udyog Nagar, Main Rohtak Road, New Delhi-110041 Ph: 011-41120000, 41120032

Customer Care Service: 011-41120018, 41120098
 cce2@actiontesa.com, cce3@actiontesa.com



Vol.01-Sept.-2021



HDF BASED EMBOSSED DECORATIVE PANELS



PRODUCT RANGE : •Pre-Laminated & Plain Particle Board •Pre-Laminated & Plain MDF & HDHMR Board •BOILO - BWP HDF Board •HDHMR Door •HDF Laminated Flooring •Embossed HDF Board •UV Coated Board •High Gloss Acrylic Board •Door Skins

Shade No.: 403



EGYPTA

UNPOLISHED

Shade No.: 407



NATURA

UNPOLISHED

Shade No.: 410



WEB

UNPOLISHED

Shade No.: 414



PLUME

UNPOLISHED

Shade No.: 415



VEINS

UNPOLISHED

Shade No.: 418



FLORA

UNPOLISHED

Shade No.: 411



CROWN TEAK

UNPOLISHED

Shade No.: 412



CUBOID

UNPOLISHED

Shade No.: 413



FLORINA

UNPOLISHED

Shade No.: 422



FERN

UNPOLISHED

Shade No.: 425



CHESS

UNPOLISHED

Shade No.: 426



PETAL

UNPOLISHED

S

Shade No.: 427



UNPOLISHED

AMOEBA

Shade No.: 429



UNPOLISHED

BUTTERFLY

Shade No.: 430



UNPOLISHED

FABRIC

Shade No.: 435



UNPOLISHED

MATS

Shade No.: 436



UNPOLISHED

HONEYCOMB

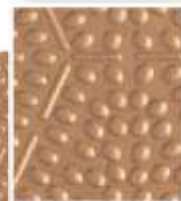
Shade No.: 438



UNPOLISHED

SANDMARKS

Shade No.: 431



UNPOLISHED

DOTS

Shade No.: 433



UNPOLISHED

TARANG

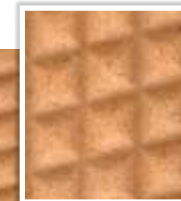
Shade No.: 434



UNPOLISHED

LEAF

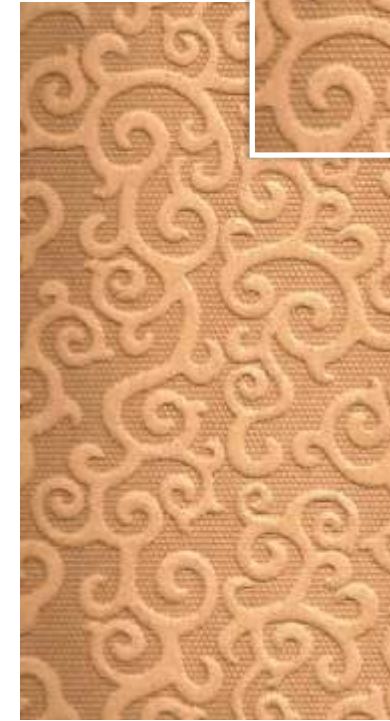
Shade No.: 439



UNPOLISHED

KNURL

Shade No.: 440



UNPOLISHED

SPIRALS

Shade No.: 441



UNPOLISHED

SWIRL

Shade No.: 442



TREAD MARK

Shade No.: 443



FLORAL

Shade No.: 446



VINE

Shade No.: 450



STENCIL

Shade No.: 451



CURLED

Shade No.: 452



OLIVE

Shade No.: 447



BLADE

Shade No.: 448



CLOUD

Shade No.: 449



JASMINE

Shade No.: 453



GEOMETRIC

Shade No.: 454



HEXA

Shade No.: 455



TURNIP

UNPOLISHED

UNPOLISHED

NEW

NEW

NEW