



WOODS

Closer to Nature

32

Astonishingly Designed Panels



"INNOVATION DISTINGUISHES BETWEEN A LEADER & A FOLLOWER"

We at Europratik strive to Innovate and Design High-end Exclusive products so our customers can choose from our wide range of Decorative Wall Panels and Designer Laminates. We aspire to serve and cater to the various market trends all across the world.

With an electrifying experience of more than 20 years and a collection of 3000+ designs we have created our network in more than 150 cities in India. We have expanded our horizons by going global.

We take utmost pride in our young and dynamic team as we have achieved several significant milestones with their support and dedication. Over the years we have set a benchmark with our Innovations & have emerged as leaders in the interior industry.



32

Astonishingly Designed Panels

2400mm x 1200mm [8ft.(H) x 4 ft.(W)] & 600mm (2ft.)



NO Atopy



SEO (Super Eco0)



NO Sick house syndrome



NO Formaldehyde



LENGTH
8ft.



Light Weight



Water Resistant



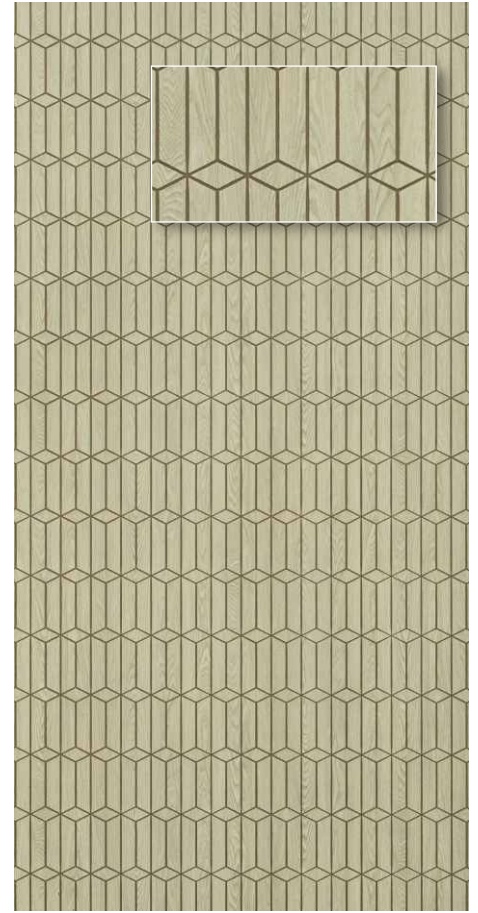
Termite & Borer Resistant



22111 - 8ft x 4ft

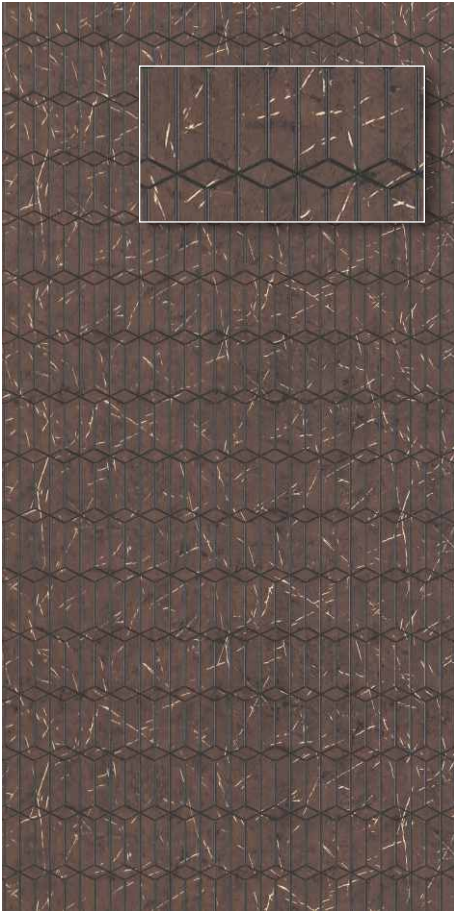


22107 - 8ft x 4ft

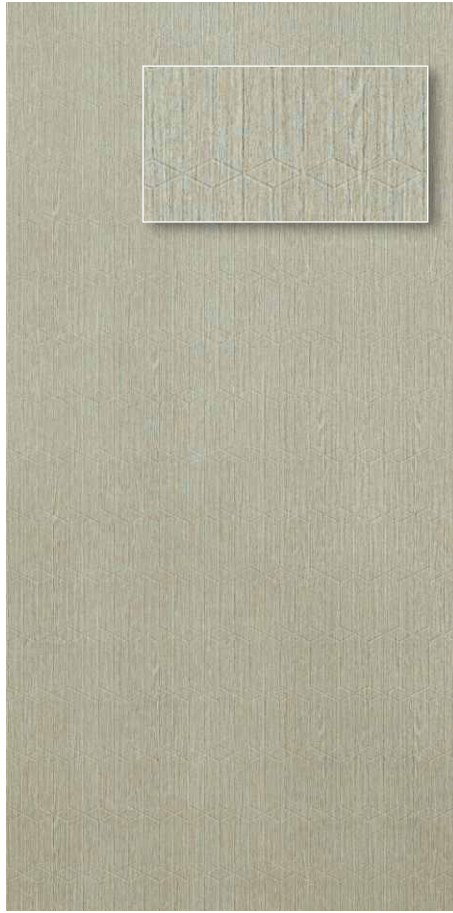


22110 - 8ft x 4ft

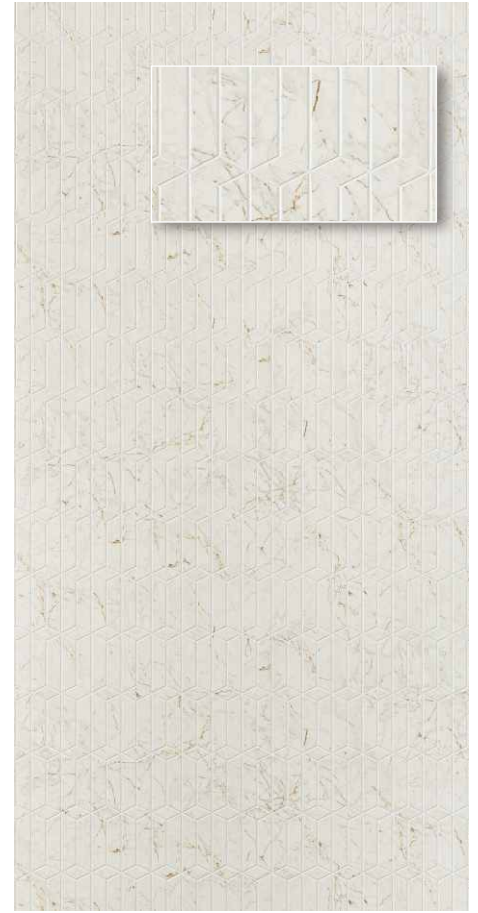




22109 - 8ft x 4ft



22106 - 8ft x 4ft

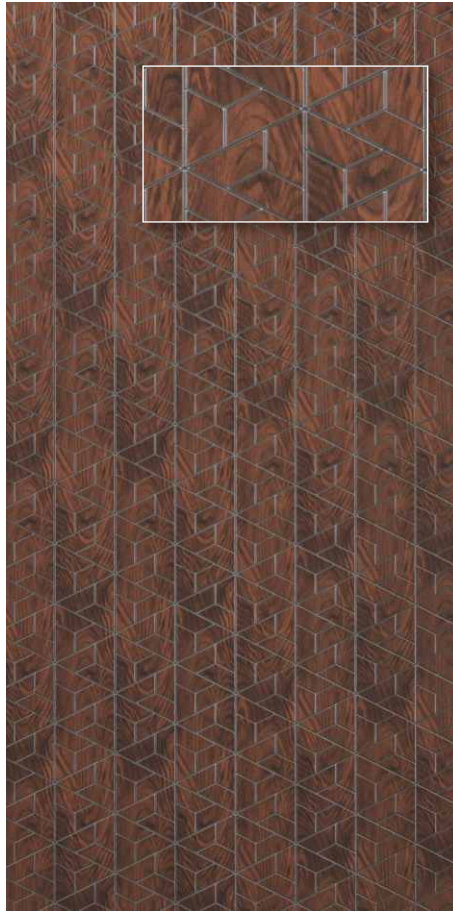


22108 - 8ft x 4ft





22115 - 8ft x 4ft

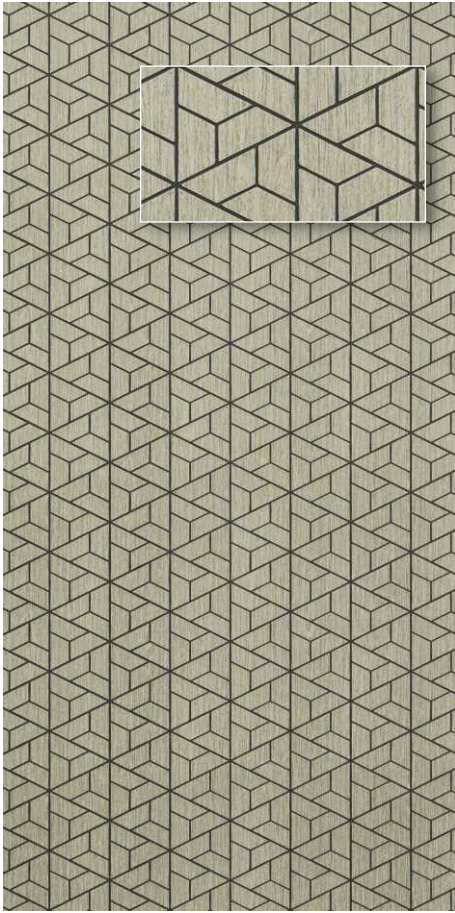


22114 - 8ft x 4ft

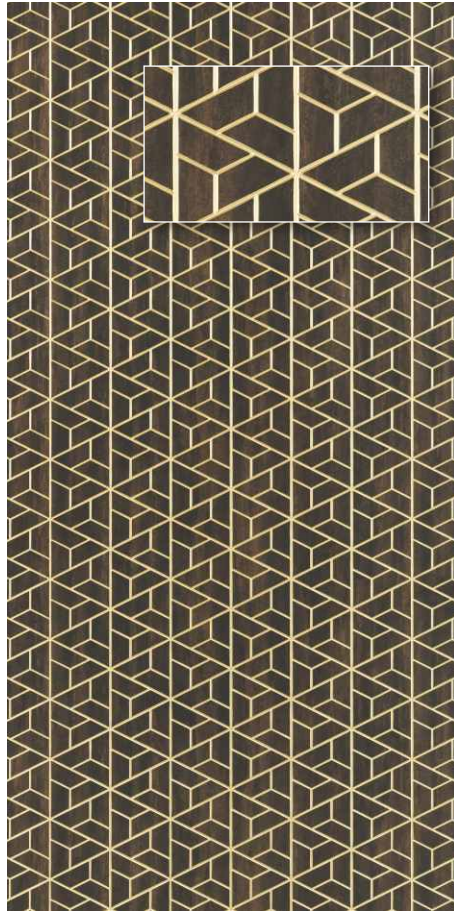


22116 - 8ft x 4ft

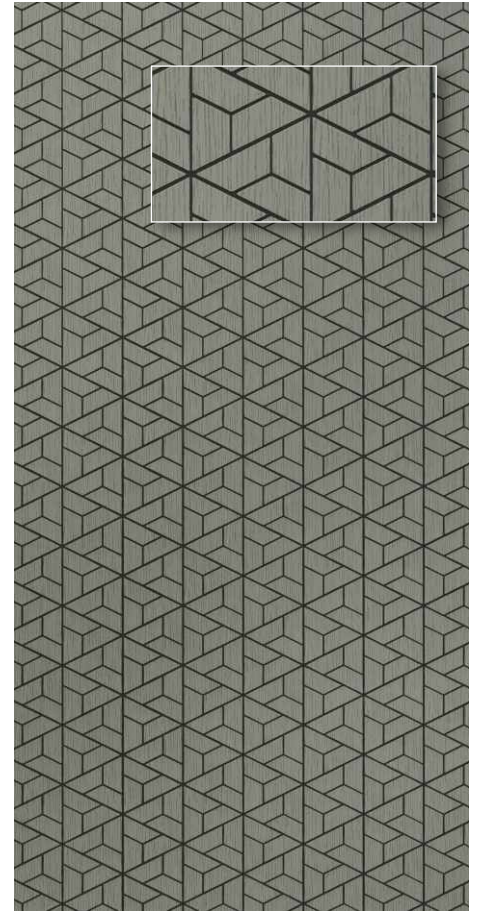




22112 - 8ft x 4ft



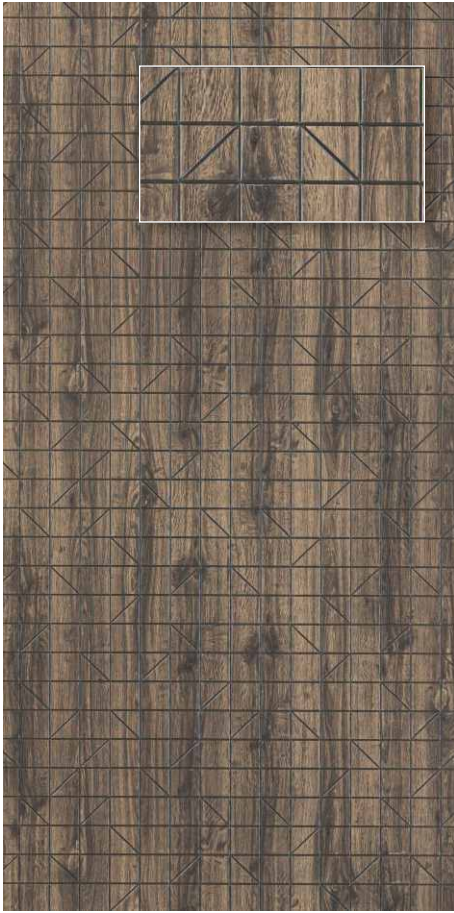
22113 - 8ft x 4ft



22117 - 8ft x 4ft



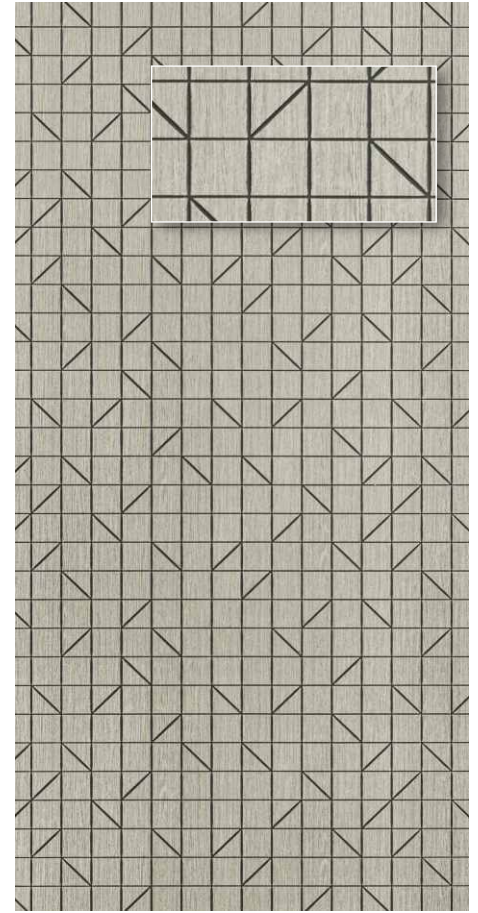




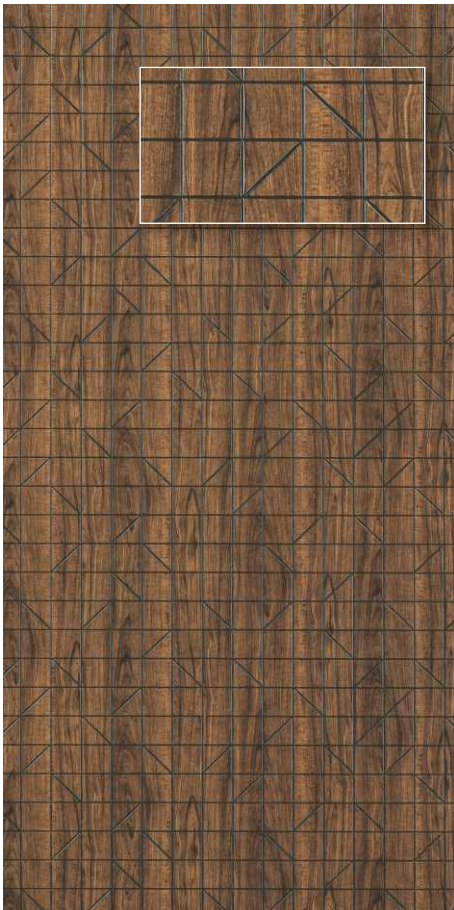
22126 - 8ft x 4ft



22123 - 8ft x 4ft



22124 - 8ft x 4ft

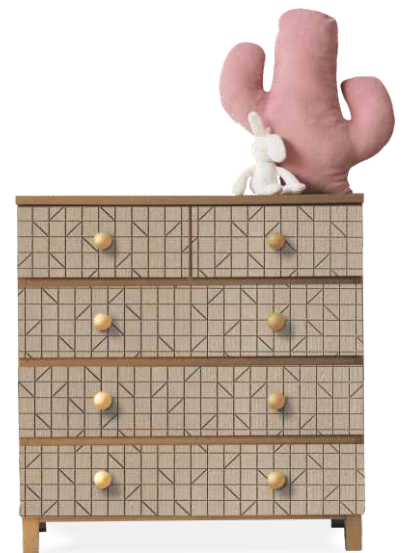


22125 - 8ft x 4ft

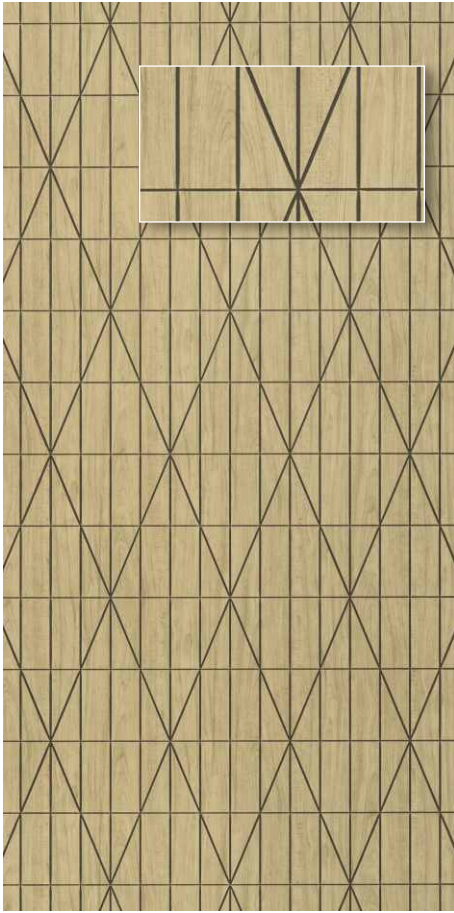


22127 - 8ft x 4ft

The Artistic Panache







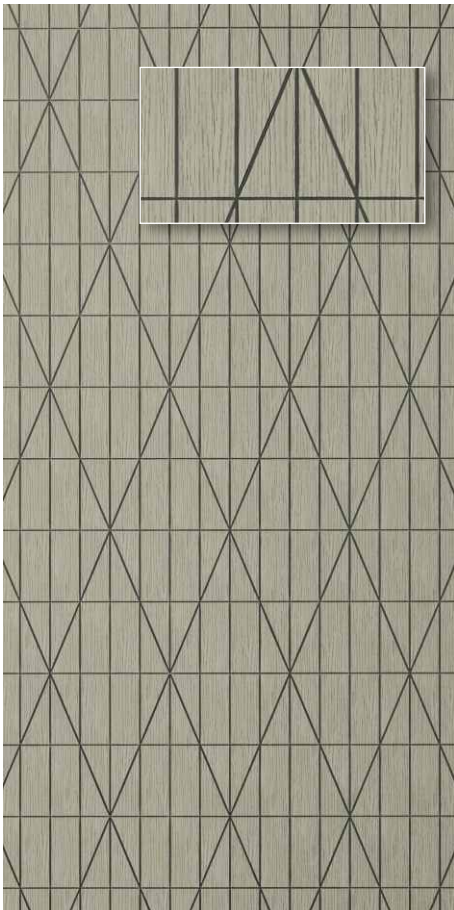
22120 - 8ft x 4ft



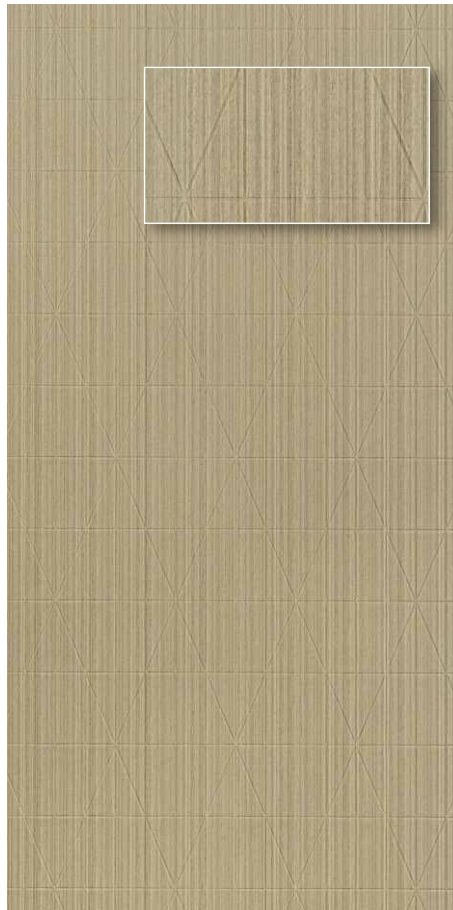
22118 - 8ft x 4ft



22119 - 8ft x 4ft



22121 - 8ft x 4ft



22122 - 8ft x 4ft

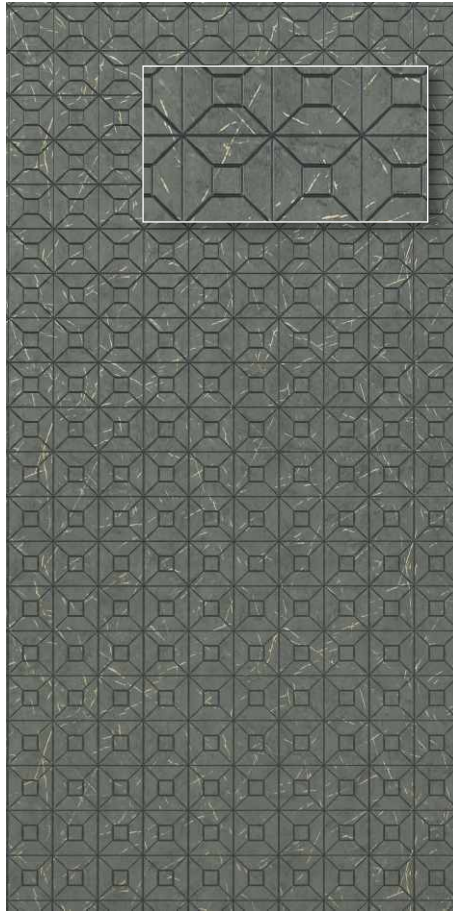


Timeless
LUXURY

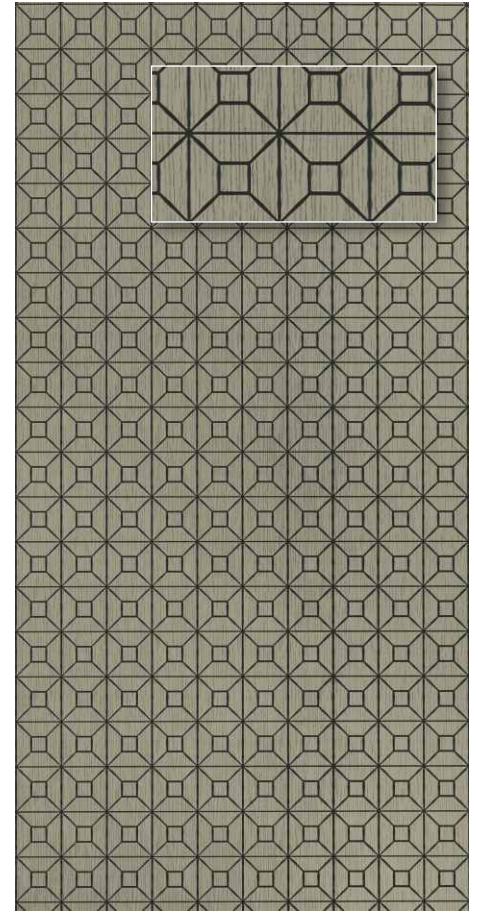




22105 - 8ft x 4ft



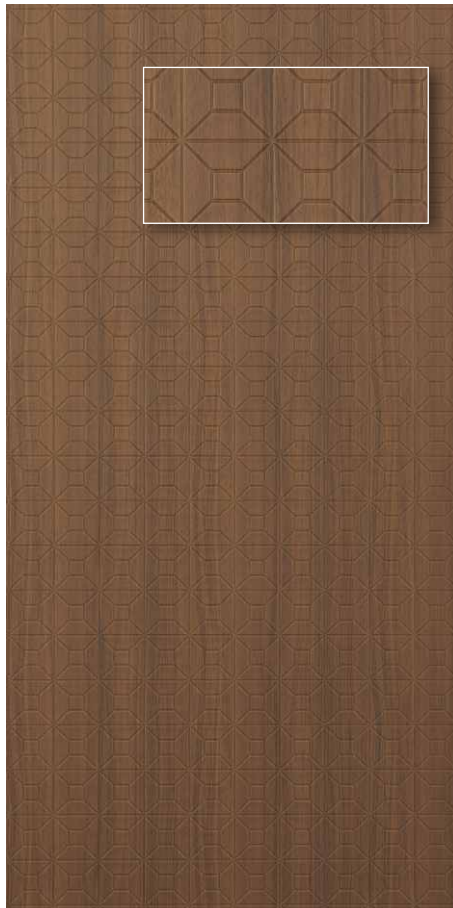
22101 - 8ft x 4ft



22102 - 8ft x 4ft



22103 - 8ft x 4ft



22104 - 8ft x 4ft

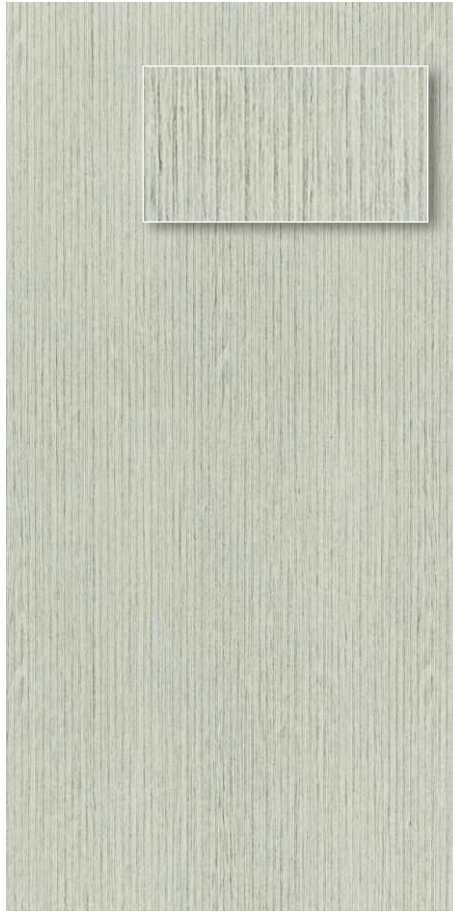
The Grand Finesse



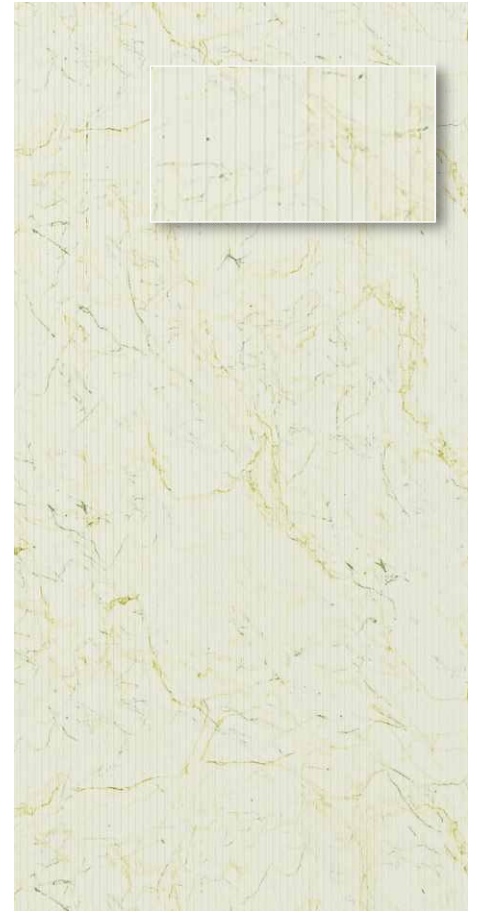




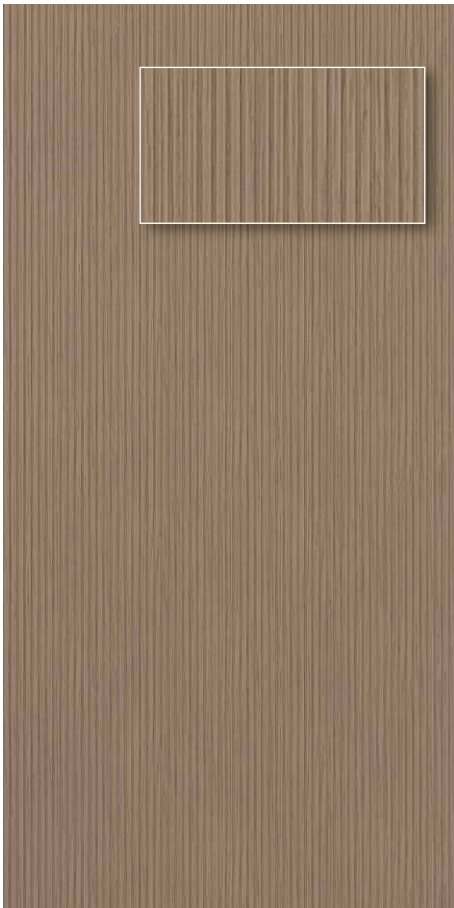
23102 - 8ft x 2ft



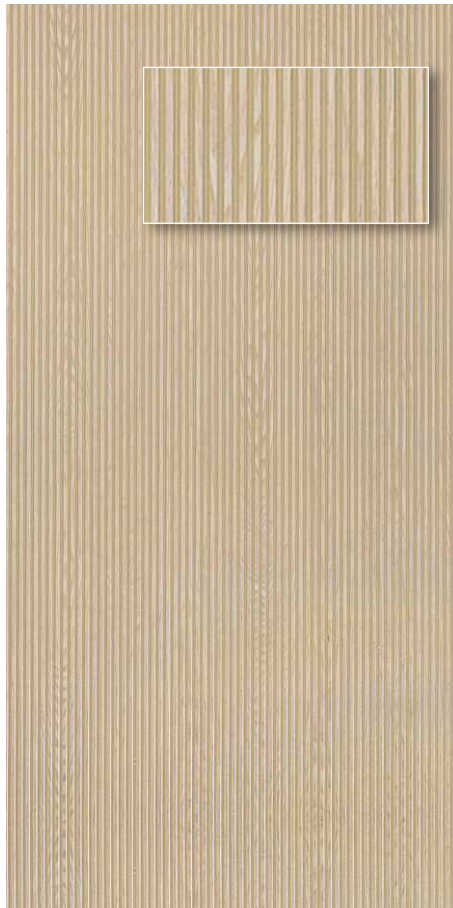
23101 - 8ft x 2ft



23103 - 8ft x 2ft

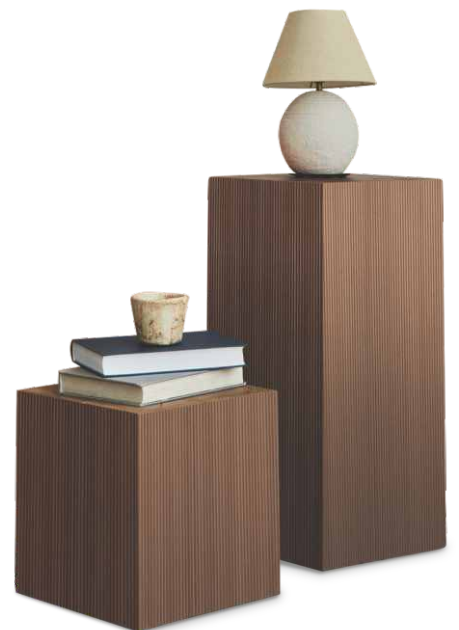


23104 - 8ft x 2ft

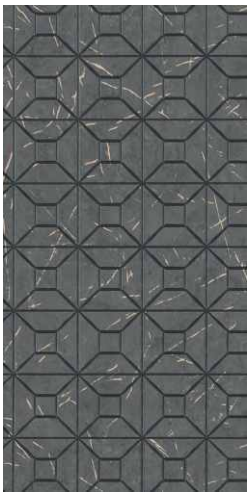


23105 - 8ft x 2ft

Impressive Royalty







22101



22102



22103



22106



22107



22111



22104



22105



22108



22109



22110

Page # 13

Page # 04 & 05



22112



22113



22114



22115



22118



22122



22119



22116



22117



22120



22121

Page # 06 & 07

Page # 11



22123



22124



22125



23101



23102



23105



22126



22127



23103



23104

Page # 09

Page # 15

SPECIAL FEATURES



ECO FRIENDLY MATERIAL

Europratik Woods are Eco friendly material, made of the same material as yogurt pot. Europratik Woods ensure safe interior space with no sick house syndrome.



CHARCOAL POWDER

Europratik Woods are much safer for children, since atopy occurrence rate caused from harmful chemicals is very low by adding charcoal powder on the product itself.



UNIQUE DESIGNS

Our range of Europratik Woods can be purchased in a wide selection of designs spanning woodgrain, marble, stone, leather, plain colours, metallic and more providing stunning solutions to any home decor styling.

WOODS HANDLING PRECAUTIONS

- * Avoid to direct sunlight and use only for interior. It can be faded in case of long exposure to sunray.
- * Woods can have a little slight different colour according to the lot number, so we recommend to install with same lot products.
- * It could be colour difference between sample book and actual sales production.
- * Recommend to keep in room temperature 24/48 hrs for acclimatization.
- * Gently handle the edge of the product.
- * Make sure the base where the Woods are being installed is smooth and dust free.
- * Woods are intended only for indoor use.
- * Woods are water proof but prolonged exposure to moisture can do harm to the product.
- * Cleaning ONLY with a soft damp cloth without any chemicals or cleaning agents.

CONSTRUCTION GUIDE

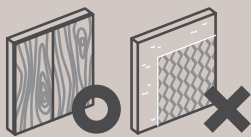
Installation Tools

WOODS

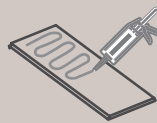
Standard Size :
2400mm x 1200mm
[8ft. (H) x 4 ft. (W)]
& 600mm (2ft.)



- 1** Prep-work with plywood/MDS is recommended before the construction. Please remove any kind of wall paper/film on the surface of the base.



- 2** Apply a quality adhesive on the back of the Woods. Apply a small amount of hot melt (glue-gun) on the back of the Decolite.



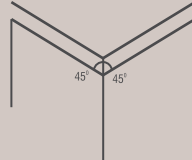
- 3** Woods can be installed in both horizontal or vertical direction.



- 4** Circular saw to be used to cut required length.



- 5** For corners, chamfer 45° & combine



* Dimension Tolerance $\pm 3\%$

CERTIFICATION



TEST REPORT

Test item	Unit	Result value	Permissible level
Formaldehyde Emission	mg/m ³ ·h	Less than 0.001	Less than 0.12
TVOC Emission / TVOC	mg/m ³ ·h	Less than 0.05	Less than 0.8
Toluene Emission	mg/m ³ ·h	Less than 0.027	Less than 0.08



Recommended Euro Pratik
Special Purpose Adhesive

